



THE POLYCLONAL ANTIBODY SPECIALISTS

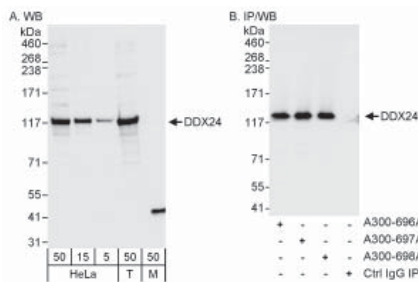
ANTIBODIES TO DEXD/H PROTEINS

The DEAH-box, DEAD-box, and DEXH-box families are collectively referred to as the DEXD/H family of proteins. DEXD/H proteins are multifunctional proteins that play important roles in virtually all aspects of RNA metabolism such as RNA synthesis, processing, export, translation, turnover, and the remodeling of ribonucleoprotein (RNP) complexes. DEXD/H proteins act principally as ATP-dependent helicases that function to unwind RNA structures. They have also been reported to play an important role in transcription; however this particular function, as well as the function of RNP remodeling, appears to be independent of their helicase activity. Although similar in structure within the helicase core, a considerable divergence exists

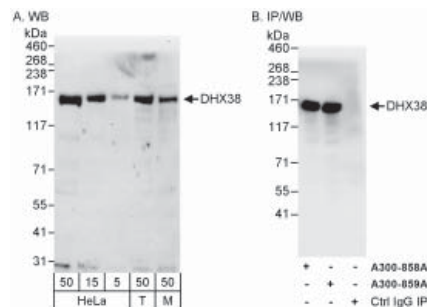
in the flanking domains of the DEXD/H proteins. This divergence likely contributes to their multifunctional capabilities as well as their specificity towards RNA substrates. The discovery that DEXD/H proteins play a role in transcription and interact with the transcriptional machinery suggests a complex role involved in coupling the processes of transcription and RNA processing. Due to their complexity, the human DEXD/H family of proteins is clearly emerging as an exciting area of research, and much work remains to be done to elucidate the specific roles and regulation of the more than 70 members of this protein family.

BETHYL LABORATORIES' CURRENT PORTFOLIO OF DEXD/H ANTIBODIES

WESTERN BLOT



Detection of Human DDX24 by Western Blot and Immunoprecipitation. **Samples:** Whole cell lysate from HeLa (5, 15 and 50 mcg for WB; 1 mg for IP, 20% of IP loaded), 293T (T; 50 mcg), and mouse NIH3T3 (M; 50 mcg) cells. **Antibodies:** Affinity purified rabbit anti-DDX24 antibody (Cat. No. A300-696A) used for WB at 0.04 mcg (A) and 1 mcg/ml (B) and used for immunoprecipitation at 3 mcg/mg lysate (B). DDX24 was also immunoprecipitated by rabbit anti-DDX24 antibody A300-697A and A300-698A. For blotting immunoprecipitated DDX24, ReliaBLOT® Reagents and Procedures (Cat. No. WB120) were used. **Detection:** Chemiluminescence with exposure times of 3 seconds (A and B).



Detection of Human and Mouse DHX38 by WB (h&m) and Immunoprecipitation (h). **Samples:** Whole cell lysate from HeLa (5, 15 and 50 mcg for WB; 1 mg for IP, 20% of IP loaded), 293T (T; 50 mcg) and mouse NIH3T3 (M; 50 mcg) cells. **Antibodies:** Affinity purified rabbit anti-DHX38 antibody A300-859A used for WB at 0.04 mcg/ml (A) and 1 mcg/ml (B) and used for IP at 3 mcg/mg lysate (B). DHX38 was also immunoprecipitated by rabbit anti-DHX38 antibody A300-858A, which recognizes an upstream epitope. For blotting immunoprecipitated DHX38, ReliaBLOT® Reagents and Procedures (Cat. No. WB120) were used. **Detection:** Chemiluminescence with exposure times of 3 minutes (A) and 10 seconds (B).

| Antibody | Applications | | |
|-------------|--------------|-----|----|
| | WB | IHC | IP |
| DDX1 | ✓ | ✓ | ✓ |
| DDX3 | ✓ | | ✓ |
| DDX5 | ✓ | ✓ | ✓ |
| DDX6 | ✓ | | ✓ |
| DDX10 | ✓ | | ✓ |
| DDX17 | ✓ | ✓ | ✓ |
| DDX18 | ✓ | | ✓ |
| DDX19 | ✓ | | ✓ |
| DDX20 | ✓ | | ✓ |
| DDX21 | ✓ | ✓ | ✓ |
| DDX23 | ✓ | | ✓ |
| DDX24 | ✓ | ✓ | ✓ |
| DDX26/DICE1 | ✓ | | |
| DDX28 | ✓ | | ✓ |
| DDX31 | ✓ | | ✓ |
| DDX41 | ✓ | | ✓ |
| DDX46 | ✓ | ✓ | ✓ |
| DDX50 | ✓ | | |
| DDX51 | ✓ | | ✓ |
| DDX54 | ✓ | | ✓ |
| DHX8 | ✓ | ✓ | ✓ |
| DHX9 | ✓ | ✓ | ✓ |
| DHX15 | ✓ | | ✓ |
| DHX16 | ✓ | | ✓ |
| DHX29 | ✓ | | ✓ |
| DHX33 | ✓ | | ✓ |
| DHX36 | ✓ | | ✓ |
| DHX37 | ✓ | | ✓ |
| DHX38 | ✓ | ✓ | ✓ |

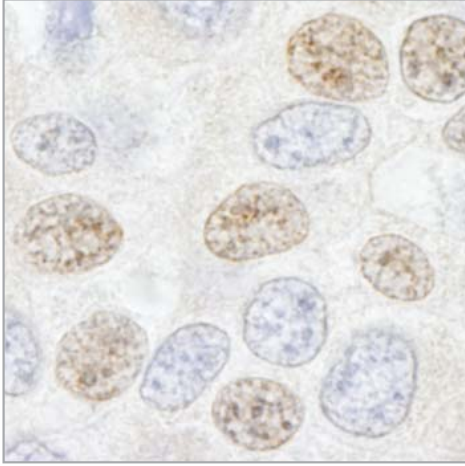
WB Western Blot, IHC Immunohistochemistry, IP Immunoprecipitation

ReliaBLOT is a registered trademark of Bethyl Laboratories, Inc.

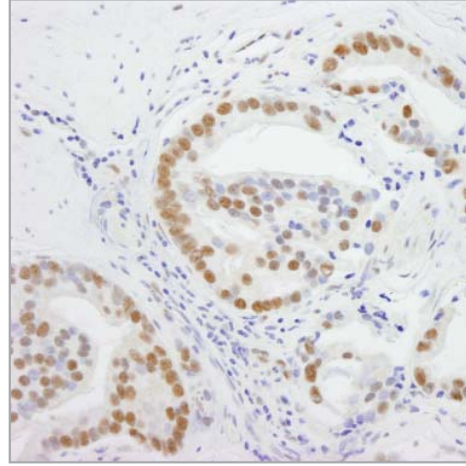
Bethyl Laboratories, Inc. | P.O. Box 850 | Montgomery, Texas 77356 | U.S. Phone: 800-338-9579 | U.S. Fax: 866-597-6105

Apoptosis • Cell Cycle • Cell Division • Chromatin Remodeling • Cytoskeletal Organization • DNA Damage/Repair • Histone Modification • Hypoxia • Kinase/Phosphatase • Nuclear Import/Export • Nuclear Receptor Coactivators • RNA Processing • Signal Transduction • Telomeric Maintenance • Transcription Factor/Regulator • Translation Control • Transport/Trafficking • Tumor Suppressors/Oncoproteins • Ubiquitination

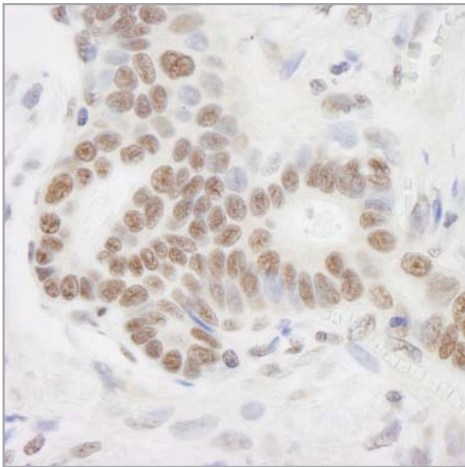
IMMUNOHISTOCHEMISTRY



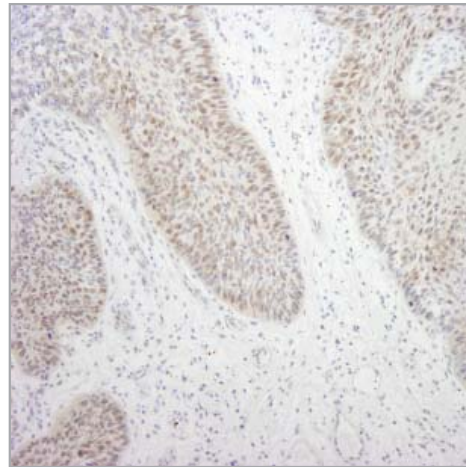
Detection of Human DDX46 by Immunohistochemistry. **Sample:** FFPE section of human breast carcinoma. **Antibody:** Affinity purified rabbit anti-DDX46 (Cat. No. IHC-00238) used at a dilution of 1:250. **Detection:** DAB staining using Immunohistochemistry Accessory Kit (Cat. No. IHC-101).



Detection of Human DDX5 by Immunohistochemistry. **Sample:** FFPE section of human prostate adenocarcinoma. **Antibody:** Affinity purified rabbit anti-DDX5 (Cat. No. IHC-00156) used at a dilution of 1:500. **Detection:** DAB staining using Immunohistochemistry Accessory Kit (Cat. No. IHC-101).



Detection of Human DDX9 by Immunohistochemistry. **Sample:** FFPE section of human stomach adenocarcinoma. **Antibody:** Affinity purified rabbit anti-DDX9 (Cat. No. IHC-00159) used at a dilution of 1:250. **Detection:** DAB staining using Immunohistochemistry Accessory Kit (Cat. No. IHC-101).



Detection of Human DDX21 by Immunohistochemistry. **Sample:** FFPE section of human larynx squamous cell carcinoma. **Antibody:** Affinity purified rabbit anti-DDX21 (Cat. No. IHC-00153) used at a dilution of 1:250. **Detection:** DAB staining using Immunohistochemistry Accessory Kit (Cat. No. IHC-101).