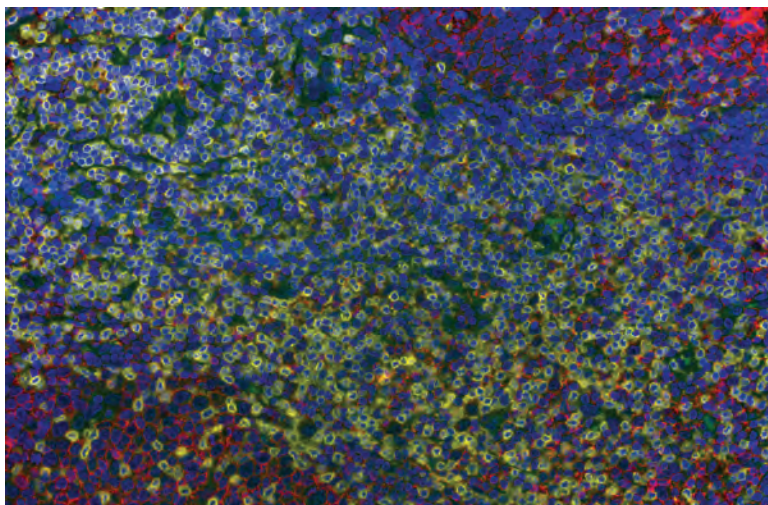
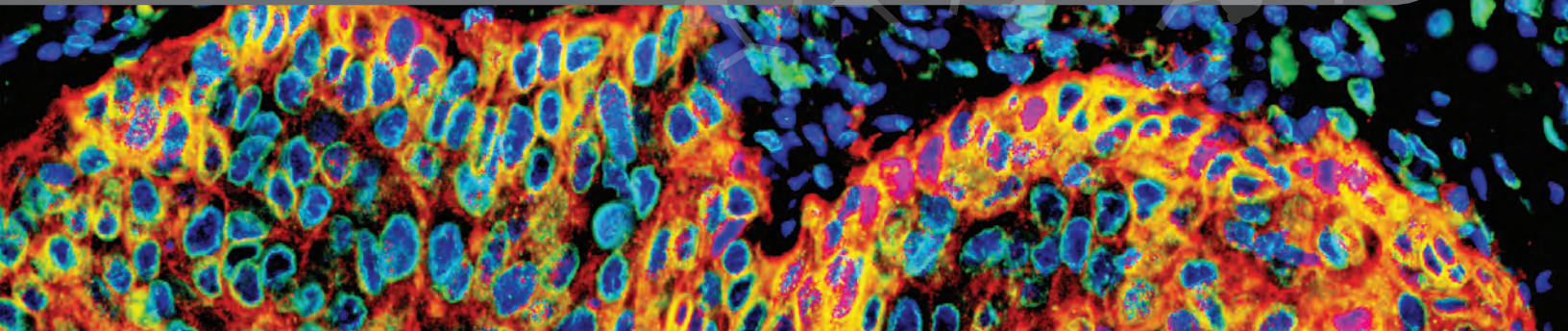


## Immuno-Oncology Targets

Over 40 Antibodies for Immuno-Oncology Research



*Upper: Detection of human PD-L1 (red) and Lamin-A/C (green) in FFPE lung carcinoma by IHC-IF. Antibody: Rabbit anti-PD-L1 recombinant monoclonal [BLR020E] (A700-020) and rabbit anti-Lamin-A/C (A303-430A). Secondary: DyLight® 594-conjugated goat anti-rabbit IgG (A120-201D4) and DyLight® 488-conjugated goat anti-rabbit IgG (A120-201D3). Counterstain: DAPI (blue).*

*Lower: Detection of human CD3E (yellow) and CD20 (red) in FFPE lymph node by IHC-IF. Antibody: Rabbit anti-CD3E recombinant monoclonal [BL-298-5D12] (A700-016) and mouse anti-CD20 monoclonal [L26] (A500-017A). Secondary: DyLight® 650-conjugated goat anti-rabbit IgG (A120-201D5) and DyLight® 594-conjugated goat anti-mouse IgG (A90-116D4). Counterstain: DAPI (blue).*

*Cancer Research*  
**Really Good Antibodies**  
bethyl.com

**BETHYL**  
LABORATORIES, INC

# Antibodies for Immuno-Oncology Research

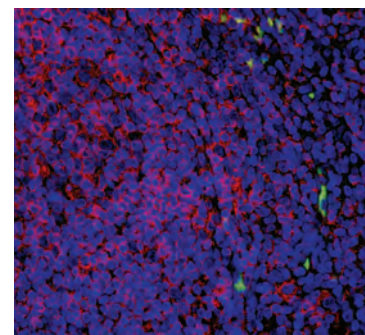
Bethyl Laboratories, Inc. is dedicated to improving lives by supporting scientific discovery through its qualified antibody products and custom antibody services. Since its founding in 1972, Bethyl has manufactured all of its antibodies on-site to exacting standards with validation to a wide range of applications.

Below is a sampling of select antibodies targeting proteins for studying immuno-oncology. To view Bethyl's complete cancer portfolio, please visit: [bethyl.com/category/pca\\_research\\_cancer](http://bethyl.com/category/pca_research_cancer).

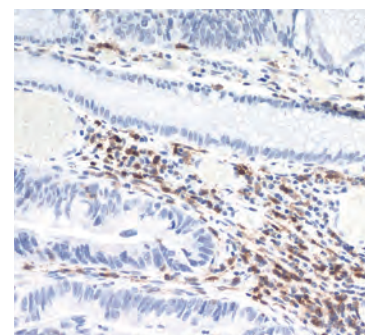
Target	Reactivities	Applications	# of Abs	AbVantage™ Pack
CARMA1	Hu	WB, IP	4	Yes
CBL/c-Cbl	Hu	WB, IP	2	Yes
CD3D	Hu	WB, IP	1	
CD3E*	Hu	WB, IP, IHC, ICC, IHC-IF	2	
CD247/CD3Z*	Hu	WB, IP, IHC	4	Yes
CD4*	Hu	WB, IP, IHC	1	
CD5	Hu	WB, IP	2	Yes
CD7	Hu	WB, IP, IHC	1	
CD8	Hu	IHC-P, F	1	
CD20	Hu	WB, IHC, ICC, IHC-F	1	
CD27	Hu	WB	1	
CD28	Hu	WB, IP	1	
CD44	Hu	WB, IP, IHC	1	
CD45*	Hu, Ms	WB, IP, IHC ICC, IHC-IF, ICC-IF	2	
CD45RO	Hu	WB, IHC, ICC	1	
CD276	Hu	WB, IP, IHC, ICC	1	Yes
CSK	Hu, Ms	WB, IP	2	Yes
DNAM-1	Hu	WB, IP	1	
GbetaL	Hu, Ms	WB, IP, PLA	2	Yes
Granzyme B*	Hu	IHC, WB	1	
HLA-DR	Hu	IHC, ICC, WB	1	
HSET1	Hu, Ms	WB, IP, IHC, IHC-IF ChIP, ChIP-chip	5	Yes
ITK	Hu	WB	1	
LYN	Hu	WB, IP		
mTOR	Hu, Ms	WB, IP, ICC, PLA	7	Yes
NECTIN1/CD111/PVRL1	Hu	IP	1	
PAK1	Hu, Ms	WB, IP	2	Yes
PAK2	Hu, Ms	WB, IP	2	Yes
PD-L1*	Hu	WB, IP, IHC, ICC, IHC-IF, ICC-IF	1	
PECAM1/CD31	Hu	IHC	1	
Protor-1	Hu	WB, IP	2	Yes
PTPN6/SHP1	Hu	WB	1	
Rictor	Hu, Ms	WB, IP, IHC, ICC, PLA	7	Yes
Sin1	Hu, Ms	WB, IP, IHC, PLA	3	
SPN/CD43	Hu	WB, IP, IHC	1	
TAL1	Hu	WB, IP	1	
TIAM1	Hu, Ms	WB	1	

All antibodies are antigen affinity purified.

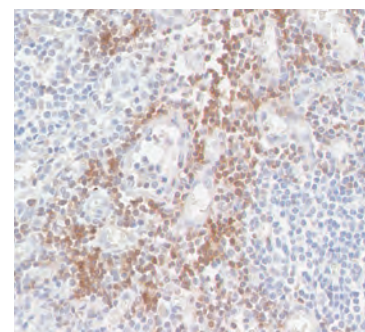
\*Recombinant rabbit monoclonal antibody available



Detection of human CD45 (red) in FFPE tonsil by IHC-IF. Antibody: Rabbit anti-CD45 recombinant monoclonal [BL-178-12C7] (A700-012). Secondary: DyLight® 594-conjugated goat anti-rabbit IgG (A120-201D4). Counterstain: DAPI (blue).



Detection of human CD4 in FFPE colon carcinoma by IHC. Antibody: Rabbit anti-CD4 recombinant monoclonal [BL-155-1C11] (A700-015). Secondary: HRP-conjugated goat anti-rabbit IgG (A120-501P). Substrate: DAB.



Detection of human CD247/CD3Z in FFPE metastatic lymph node from lung carcinoma by IHC. Antibody: Rabbit anti-CD247/CD3Z recombinant monoclonal [BL-336-1B2] (A700-017). Secondary: HRP-conjugated goat anti-rabbit IgG (A120-501P). Substrate: DAB.

Distributed by:

Tel.: 915 515 403

Fax: 914 334 545

e-mail: [info@bionova.es](mailto:info@bionova.es)



[www.bionova.es](http://www.bionova.es)



We Make Every Antibody We Sell.