

RayBio® Transcription Factor Activity Assays

ELISA-based detection of transcription factor transactivity



REPLACE YOUR GEL SHIFT ASSAYS!

how it works



The RayBio Transcription Factor (TF) Activity Assay Kits

are in vitro enzyme-linked immunosorbent assays for the semi-quantitative measurement of active transcription factors in nuclear extracts and cell lysates.

- Specific transcription factor-DNA binding assay
- Non-radioactive: perfect alternative to EMSA
- Simple: colorimetric ELISA-based protocol
- Rapid: 5 hour processing time
- High throughput: 96-well plate format

How it works: Double stranded oligonucleotides are coated onto a 96-well plate. The oligonucleotides specifically capture the target transcription factor contained in whole cell lysates or nuclear extracts after a short incubation. Subsequently, the primary antibody recognizes the target transcription factor-DNA complex in each well, and a HRP-conjugated secondary antibody is then used for detection. After washing away unbound antibody, signal is obtained with a colorimetric plate reader at 450 nm. The specificity of binding between the transcription factor and the DNA element can be further validated by control probes included in the kit: a specific competitive DNA probe and non-specific competitive DNA probe.

RayBio® Transcription Factor Activity Assays

ELISA-based detection of transcription factor transactivity



CAT. NO.

TFEH-p50
TFEH-p65
TFEH-pCREB
TFEH-P53
TFEH-SOX2
TFEH-TFEB
TFEH-FOSB
TFEH-CFOS
TFEH-NRF2
TFEH-cMyc
TFEH-OCT4
TFEH-HIF1α
TFEH-GATA-1
TFEH-GATA-2
TFEH-GATA-3
TFEH-JUNB
TFEH-JUND
TFEH-NANOG
TFEH-NFYA
TFEH-FRA2
TFEH-MEF2
TFEH-SP1
TFEM-NRF2

TARGET NAME

Human NF-κB p50
Human NF-κB p65
Human pCREB
Human p53
Human SOX2
Human TFEB
Human fosB
Human c-Fos
Human NRF2
Human c-Myc
Human OCT4
Human HIF-1α
Human GATA-1
Human GATA-2
Human GATA-3
Human jun-B
Human jun-D
Human NANOG
Human NF-YA
Human FRA-2
Human MEF2
Human SP-1
Mouse NRF2

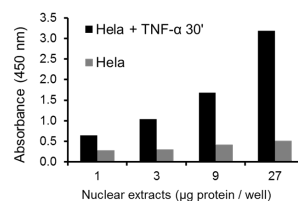
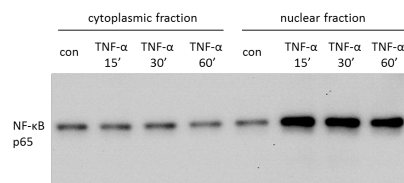
ALSO AVAILABLE: RayBio® Nuclear Extraction Kit (Cat. No. NE-50). Using our simple protocol, isolate cytoplasmic and nuclear protein fractions from up to 50 cell or tissue samples. This kit is highly recommended for use with RayBio TF Activity Assays.

KEEP LOOKING

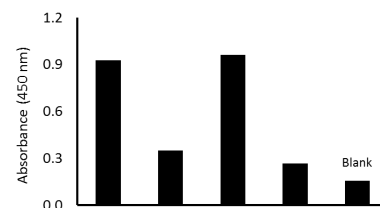
To further explore cellular pathways related to your transcription factor of interest, visit our interactive pathway maps to find additional assay kits.

<https://www.raybiotech.com/pathways-and-processes.html>

representative data



NF-κB p65 TF Activity Assay vs. Western Blot



GATA-3 TF Activity Assay with HeLa and Jurkat Nuclear Extracts