



OMEGA LUM™ C

High Performance Chemiluminescent and Gel Imaging

OMEGA LUM™ W

Multicolor and Chemiluminescent Western Imaging

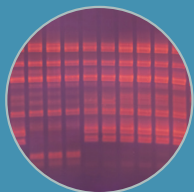
gel
company

It's time for a New Perspective on Western Blot Imaging

APPLICATIONS

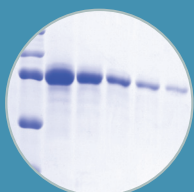
UV IMAGING

Quick imaging of samples
excited by UV



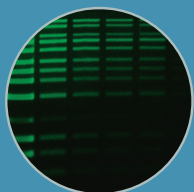
VISIBLE

Sharp images of Coomassie
gels or other visible dyes



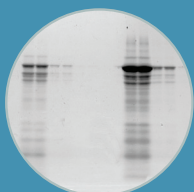
BLUE LIGHT IMAGING

View fluorescent stains
with less damage to DNA



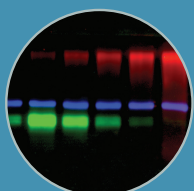
CHEMILUMINESCENCE

Sensitive detection, fast imaging



MULTI-PLEX

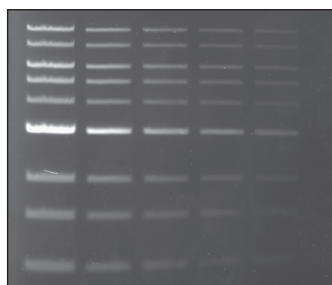
Visualize multiple proteins
in a single blot



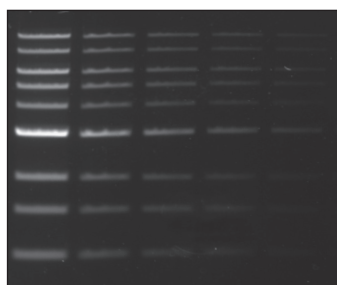
Application Flexibility

Multiple excitation sources allow you to visualize a wide range of gel stains, making the Omega Lum C and W the most versatile imaging systems available.

a. Ethidium Bromide



b. SYBR® Safe

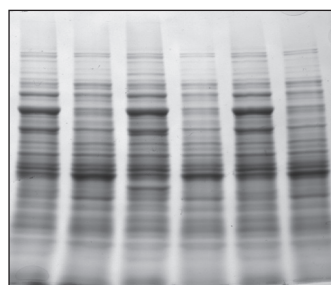


250 125 62.5 31.3 15.6
ng DNA

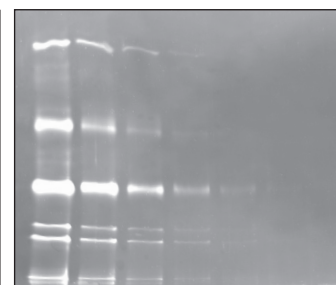
Ethidium bromide is a standard in the lab, but SYBR® Safe stain is specifically formulated to be a less hazardous alternative that can be imaged with blue-light instead of UV excitation.

Sample: Quick-Load® 1 kb DNA Ladder (NEB)

a. Coomassie Blue



b. Fluorescent stain



Protein gels stained with a) Coomassie Blue and b) a fluorescent protein stain. The Omega Lum C captures high resolution images for documentation or publications.

Sample: a) Whole cell lysate, b) protein purification

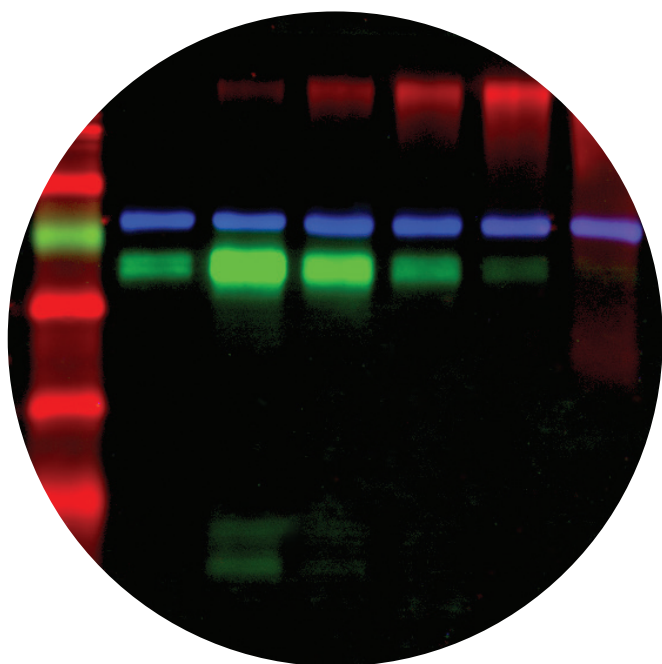
System Flexibility

The Omega Lum C offers the highest quality western blot images, and can be fully upgraded to the Omega Lum W, expanding your research options.



Multi-Channel Imaging

- Image proteins in the Cy[®]2, Cy[®]3, & Cy[®]5 channels without the need to strip and re-probe
- Resolve closely migrating bands, and quickly extract them in your image for analysis



The Aplegen Advantage

(Signal-Background)/Time

	OMEGA LUM W	COMPETITOR A	COMPETITOR B
Red	836	5310	4530
Green	10207	51651	25528
Blue	1204	3862	2723

Red/Green/Blue channels
of Omega Lum W vs.
competitors

- Lower background counts compared to competitors
- Aplegen offers superior separation in the blue & green channels



RGB
EXTRACT

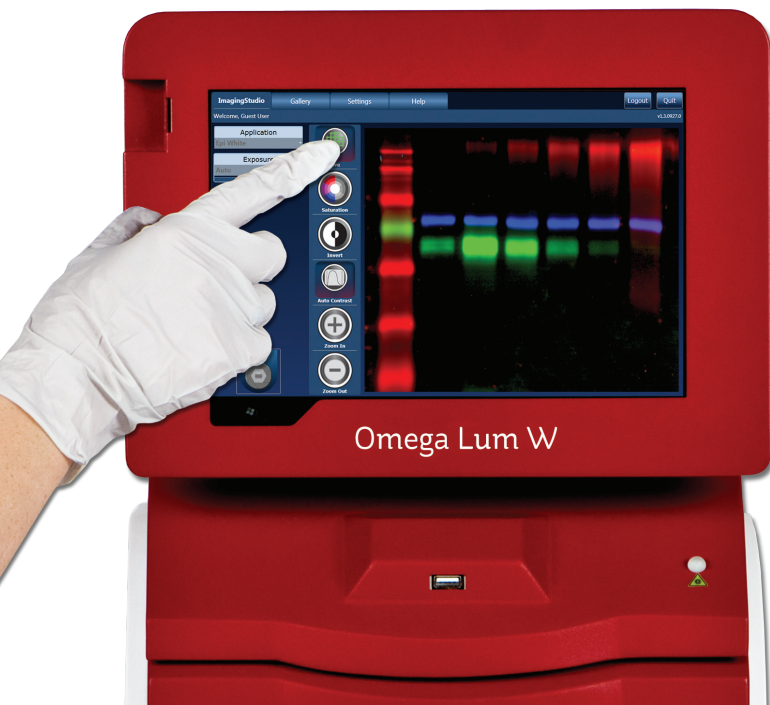
- One of the most sensitive cameras available
- Streamlined workflow, including the easy extraction of channels for downstream analysis



Simple User Interface

The touch screen provides a straightforward user interface for capturing images on the Omega Lum W.

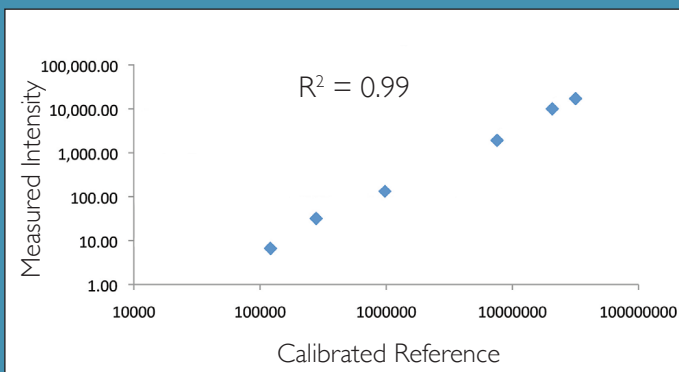
- 1 Select an Application
- 2 Select an Exposure
- 3 Capture Your Image



Quantitative Results

The Omega Lum C & W are optimized for superior detection of chemiluminescent Western blots. A wide dynamic range and fast imaging speeds mean that you will spend less time trying to get the perfect image.

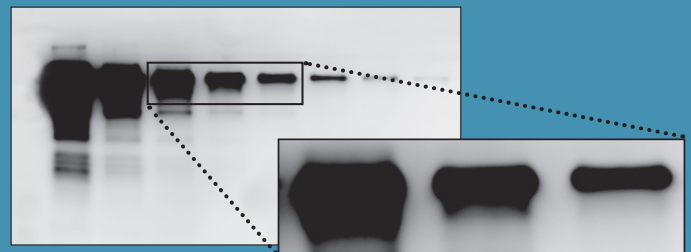
Dynamic Range



Evaluation of dynamic range. Detection of calibrated light source was imaged on the Omega Lum C. The results demonstrate a dynamic range of over three orders of magnitude.

Sample: Calibrated luminescent plate

High Resolution



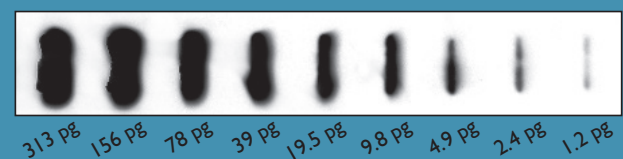
Over 8 megapixels of resolution provides you with sharp images for your publications or posters.

Sample: Purified transferrin

Substrate: Advanta WesternBright™ Quantum

Imaging method: Chemi-Hi Res

Sensitive Detection



Industry-leading technology in the Omega Lum C & W provides the sensitivity, broad dynamic range and accuracy required for quantitative Western blotting.

Sample: Slot blot of secondary antibody

Antibody: Anti-rabbit-HRP

Imaging method: Chemi

Imaging time: 4 minutes

Ordering Information

PRODUCT NAME	DESCRIPTION	PART NUMBER
Omega Lum C Imaging System	8MP camera with 16 bit A/D, regulated cooling to 50°C below ambient, F 0.95 lens, 6 position motorized filter wheel, 302/365 nm transilluminator, EPI white lights, EPI Blue LEDs, white light tray, chemi tray, Orange filter, tablet computer, capture software and 3 licenses of analysis software	81-12110-00
Omega Lum W Imaging System	8MP camera with 16 bit A/D, regulated cooling to 50°C below ambient, F 0.95 lens, 6 position motorized filter wheel, 302/365 nm transilluminator, EPI white lights, EPI Blue LEDs, white light tray, chemi tray, EPI LEDs at 457, 530 and 628nm, Orange, Red, Green and Blue filters, tablet computer, capture software and 3 licenses of analysis software	81-12120-00
Omega Lum W Upgrade	Software and hardware upgrade for Red/Green/Blue 3-channel image acquisition and analysis on existing Omega Lum C system	81-12366-00
Printer, P-95DW	USB Connected Thermal Printer	23-12021-00
Thermal Paper	High density paper, 4 rolls	26-12022-00
Clear Gel Tray	UV transmitting tray for gel handling	34-12018-00
White Light Conversion Tray	UV to white light conversion screen for visible dyes	34-12019-00



Distribuido por:

Tel.: 915 515 403
Fax: 914 334 545
e-mail: info@bionova.es
www.bionova.es

Aplegen's goal is quite simple: We are committed to developing the highest quality imaging systems in the world, and our vision is purely shaped by our customer's needs and feedback. Aplegen is committed to working with you so you can get superior images with the best, most personalized service possible.

Specifications

	OMEGA LUM C	OMEGA LUM W
Camera	<ul style="list-style-type: none"> • 8MP for high resolution images • Cooled 50°C from ambient for chemi imaging • USB connection for simple set up • High quality images ideal for downstream analysis 	<ul style="list-style-type: none"> • 8MP for high resolution images • Cooled 50°C from ambient for chemi imaging • USB connection for simple set up • High quality images ideal for downstream analysis
Lens	F 0.95 Lens	F 0.95 Lens
Field of View	15 x 20 cm	15 x 20 cm
Cabinet	<ul style="list-style-type: none"> • 365/302 nm pull out UV transilluminator • EPI white lights • EPI blue LEDs 	<ul style="list-style-type: none"> • 365/302 nm pull out UV transilluminator • EPI white lights • EPI blue LEDs • EPI LEDs at 457, 530 and 628nm
Filters	Orange filter standard, 6 position filter wheel	Orange, Red, Green and Blue filters standard, 6 position filter wheel
Certifications	CE, cTUVus	CE, cTUVus
Product Footprint	12.5" x 18" x 27.5"	12.5" x 18" x 27.5"

	OMEGA LUM C	OMEGA LUM W
UV Imaging	✓	✓
White Light Imaging	✓	✓
Blue Light Imaging	✓	✓
Chemi Imaging	✓	✓
Multicolor Western Imaging		✓

The Aplegen wordmark, the Aplegen logo, and Omega Lum are trademarks of Gel Company, Inc. Your unauthorized use or misuse of our copyrighted material or trademarks is expressly prohibited and may be in violation of copyright law, trademark law, and other laws, statutes and/or regulations. All other trademarks are the property of their respective owners.

